



www.memoris.fr

# A few words about us

## From data to information systems

**MEMORIS' goal is to set up databases along with specific tools and associated services in order to build up information management and decision-aid systems.**

MEMORIS proposes a complete range of services in the field of GIS: data acquisition, data processing, consulting, studies, assistance to owners, computer development, training and setting up of information systems

## MEMORIS' environment

MEMORIS is a new company established in January 2004, as a subsidiary of the SCE Group and FIT Group, based in Nantes, France. SCE is specialized in regional planning and the environment. FIT is an expert company in topographic, photogrammetric and property data acquisition.

MEMORIS' current workforce is 40 employees. SCE Group (310 people) and FIT Group (220 people) are 50/50 shareholders.



## MEMORIS' approach

**MEMORIS' offer is based on twofold expertise:**

- **Job expertise**, thanks to SCE's and FIT's skills in the fields of: urban development, urban and regional planning, landscape, acoustics, urban and transport infrastructure, property management, rural management, hydraulics, water management, oceanography
- **Computer skills**, covering mapping, image processing, database development and Geographic Information Systems.

**MEMORIS wish to offer to its customers:**

- **independence with respect to software editors** and data producers
- **commitment to ensure the permanence** of owners' operations
- **total transparency** in proposing solutions
- **attention to** the customer's needs
- **pragmatism drawn** from deep experience
- **knowledge of the players involved** (functions, roles, organizational operation, etc.)
- **data expertise**
- **real project management**
- **tailored quality assurance process**



## Our software tools

**Tools for digital mapping: Geographic Information Systems:** ArcView and ArcGIS, etc. • MapInfo • GéoMédia • GéoConcept • AutoCad Map • CadCorp Sis • Pci Geomatics • **Digitization of cartographic data:** AutoCad LT • AutoCad • MicroStation • **Image processing:** GéoRef under ArcView • Erdas.

**Infographics tools: CAD and graphic illustration:** Suite CorelDraw • Illustrator • Photoshop • **Web:** Dreamweaver • Flash • Fireworks • FreeHand.

**Software development tools: Software development:** Visual Studio 6 • Visual Basic.Net • Visual Basic Application • Visual C++ • **Intranet/Internet development:** UltraDev ASP, VbScript, Javascript • Visual Interdev • Visual J++ • XML, XSL, SVG langages • **Development linked to digital mapping:** Arc Objects • AML • Avenue • Map Objects • ActiveX SIS • MapX et MapXtreme • MapBasic • GéoMédia • **Assistance in finalizing software development:** Install Shield • DoToHelp.

**Database management tools: alphanumeric DBMS:** Access • Oracle • SQL Server • **Cartographic DBMS:** SpatialWare (MapInfo) • Arc SDE • GéoMédia • **Data modeling tools:** PowerAMC.

**Tools for project and business managers: Office software:** Office • Visio • Adobe Acrobat • **Software for project management:** MS Project • Visual Source Safe.

## Customer references

Ademe Martinique • Agence de l'eau Loire Bretagne • Agence de l'eau Rhône-Méditerranée Corse • Agence de l'eau Seine-Normandie • Apa Nova Bucarest • Apa Nova Ploiesti • Arvalys • Bangalore Development Authority • Bangalore Water Supply And Sewerage Board • Chambre d'Agriculture de Loire-Atlantique • Communauté d'Agglomération de la Région Nazairienne et de l'Estuaire • Communauté de Communes de Thouarsais • Communauté Urbaine de Nantes • Conseils Généraux (01, 03, 13, 16, 22, 34, 35, 44, 45, 50, 52, 53, 64, 85, 972...) • Conseil Régional Provence Alpes Côte d'Azur • Conservatoire Botanique National du Massif Central • Directions Départementales de l'Agriculture et de la Forêt (18, 29, 44, 85...) • Directions Départementales de l'Équipement (34, 35, 44, 59, 69, Martinique...) • Directions Régionales de l'Environnement (Bretagne, Basse Normandie, Centre, Île de France, Haute Normandie, Midi-Pyrénées, Nord Pas de Calais, Poitou Charente, Provence Alpes Côte d'Azur...) • Institut Français de l'environnement Lga Madagascar • Institut Géographique National • Mairie de Benesse Maremne • Maison des Communes de Vendée • Ministère de l'Écologie et du Développement Durable • Office International de l'Eau • Office des Eaux de Beyrouth • ONVINS • Parc Naturel Régional de Brière • Société Anonyme de Gestion des Eaux de Paris • Service Départemental d'Incendie et de Secours 44 • Syndicat Départemental d'Électricité des Côtes d'Armor • Syndicat Intercommunal du Gave de Pau • Syndicat des Eaux de l'Île de France • Syndicat Eau et Assainissement du Gouëssant • Total Indonesia • Ville de Marseille...

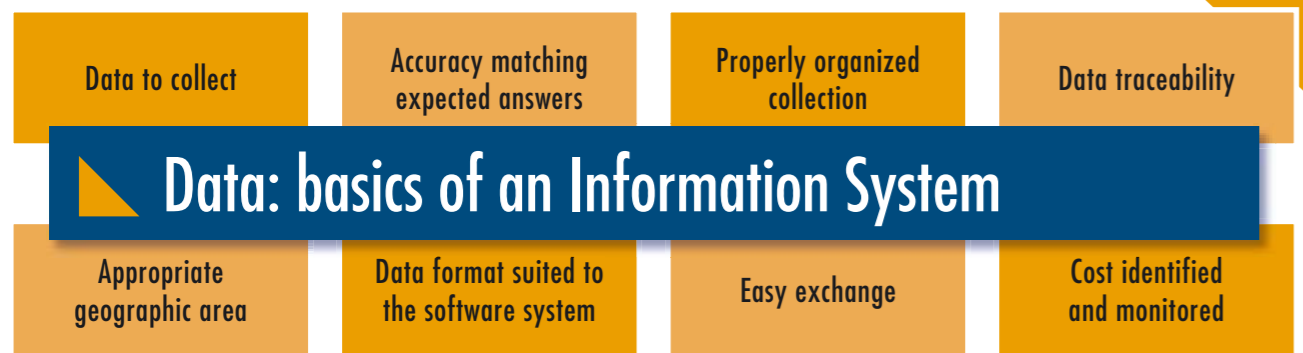
Route de Gachet - BP 10703 - 44 307 Nantes Cedex 3 - France  
Tel. 33 (0) 2 40 68 50 90 - Fax 33 (0) 2 28 01 38 37  
Email: nantes@memoris.fr  
www.memoris.fr



Manage your property information simply and efficiently

# Data engineering

MEMORIS acquires, organizes and integrates your geographical and utility infrastructure data.



## Land ownership



Scanning • Vectorization • Georeferencing • Assembling • Computerized cadastral map • Geometry correction...

## Networks



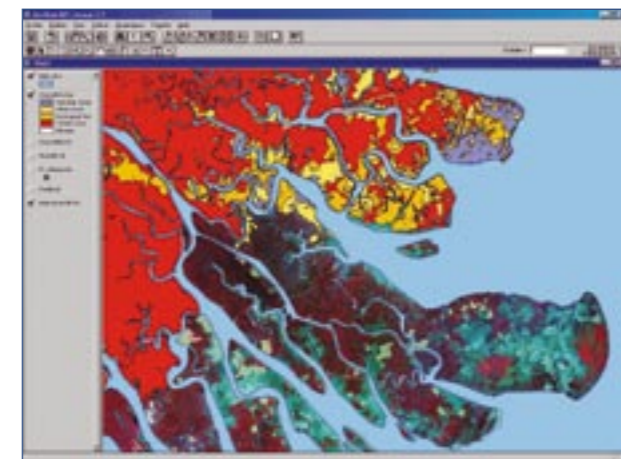
Data collation • Analysis of existing situation • Base map preparation • network digitization • Data structuring • Data integration • Database maintenance...

## Real Estate



Map digitization • Ground plan, overview map • Building plan: level, front, section • Qualitative and quantitative description • Graphical data structuring • 3D representation • Data integration...

## Environment



Thematic mapping • Spatial analysis • Image processing • Setting up of Geographic Information Systems • Map editing...

# Information systems

MEMORIS assists you in implementing your information system and develops your specific applications.

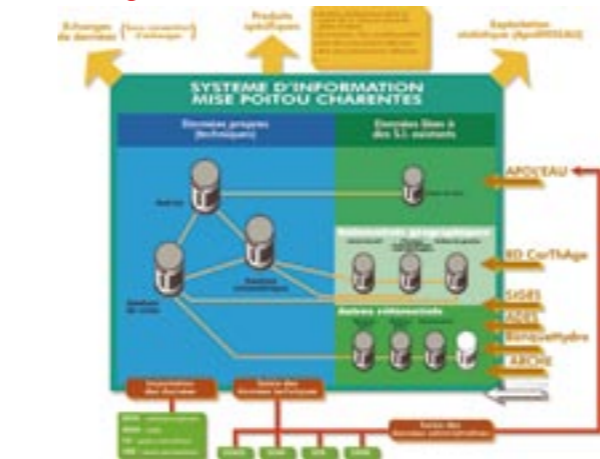


## Consulting and audit



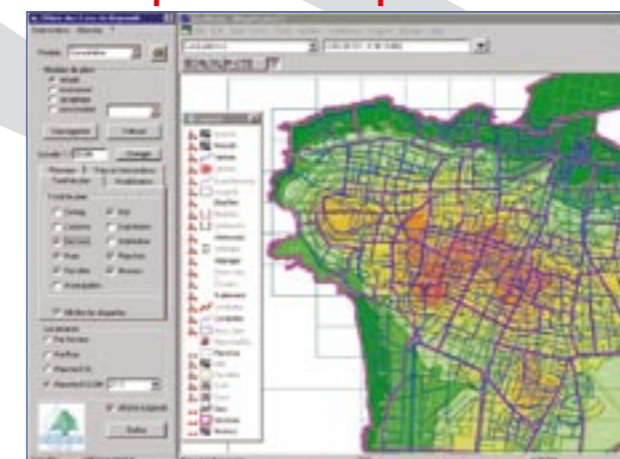
Consultancy in Information Systems engineering • Management consultancy • Assistance to owners in setting-up GIS • Information System master plan • Development plan for information systems...

## Organization and studies



Preliminary studies • Feasibility studies • Specification writing • Information systems design • Definition and organization of reference and thematic data...

## Computer development



Design • Specific development • Deployment of alphanumerical and cartographic databases • Databases and GIS • Database conversion • Web sites...

## Training and assistance



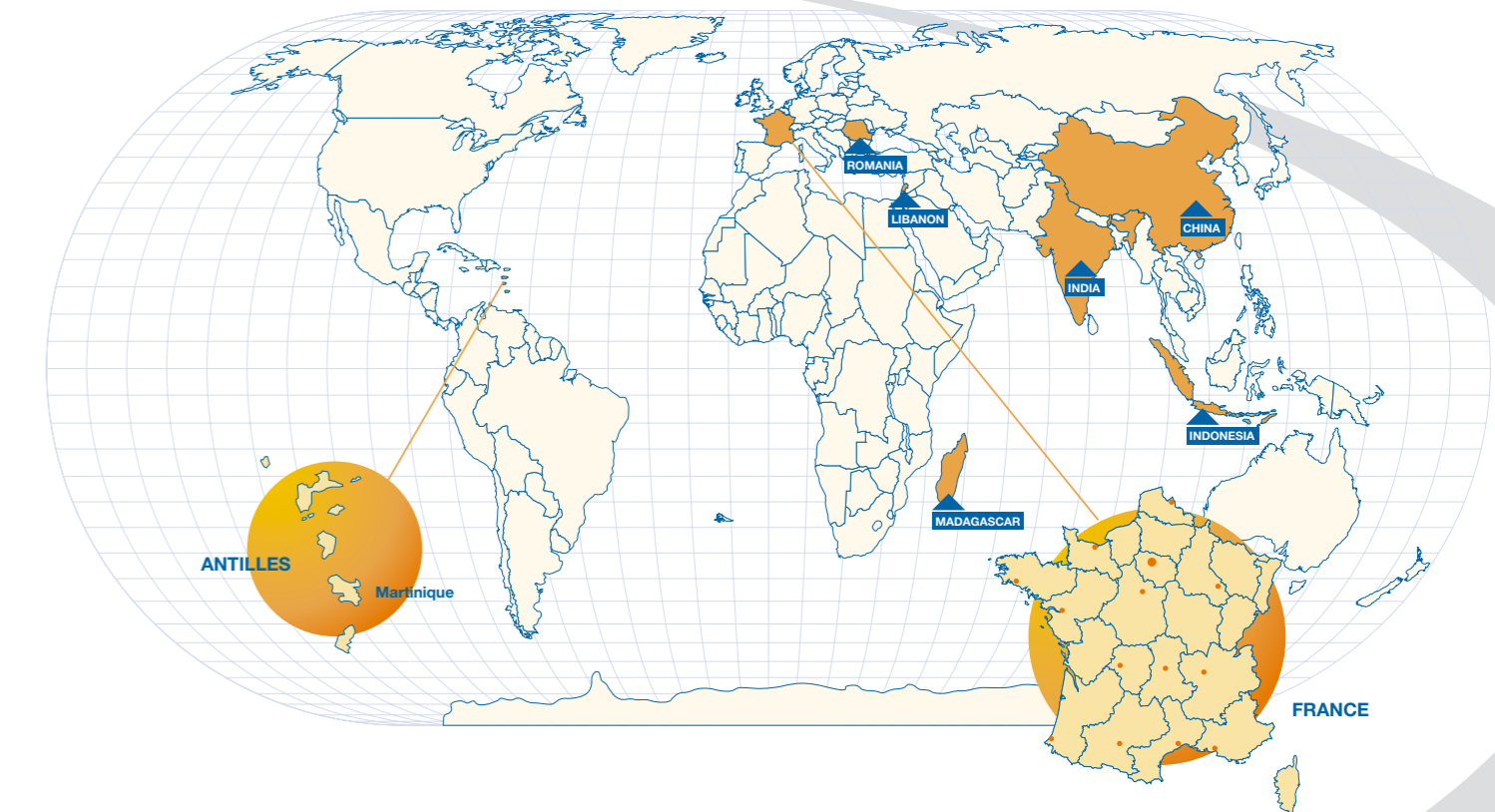
Assistance in implementing solutions • Definition of working procedures • Training and know-how transfer • Maintenance • Data and web site hosting...



# In France and all over the world

MEMORIS offers its know-how to customers from all over the world.

MEMORIS draws on the experience it has gained through different projects, to operate abroad.



## Several references abroad



Local administrative bodies in Martinique • APA NOVA Bucharest et Ploiesti (Romania) • Bangalore Development Authority, Bangalore Water Supply and Sewerage Board (India) • French Institute for the Environment in Madagascar • Beirut Water Board (Lebanon) • TOTAL Indonesia...

## Strong incentives



Staff motivation • Wide experience • The support of existing structures within the two groups to which MEMORIS belongs...